

# 1967 Piper PA28-160 "Cherokee"

---

## Specifications

---

**Price** \$ 61,500.00

**Year** 1967

**Serial** 28-23394

**Registration** N9874W

**TTAF** 6500

**Ad Type** For Sale

**Location** Lewiston, ID

**Type** Sold

**Summary** Great condition 1967 Piper PA28-160 "Cherokee" (Fresh annual)

**Airframe Details:** Total Time on Airframe: 6500 Hours

Weight and Balance: April 15, 1997  
Standard Empty Wt: 1285.4 pounds  
Useful Load: 864.6 pounds

**Engine Detail** Engine Type: Reciprocating  
Engine Mfg: Lycoming O-320-D3G  
Engine Model: O-320-D3G  
Engine S/N: L-12998-39A  
Engine Overhauled: May 2021  
Total Engine Time: 100.00 Hours  
Mfg TBO: 1,500 hrs  
Note: 160 horsepower engine upgrade Ram air STC

Prop Mfg: Sensenich  
Prop Model: 74DM6-0-60 (2 bladed)

**Avionics** Garmin GNX 375  
Garmin GAE 12 Altitude encoder  
Garmin GA 35 GPS antenna  
Sigtronics SPA-45 4 place intercom  
Garmin SL40 radio  
Garmin Aera 500 series GPS  
EI Digital tachometer  
EI UBG Engine monitor

**Exterior** Exterior paint Colors: White exterior paint with orange and black strips  
Rated 8 out of 10

**Interior:** Interior Colors: Seat are a brown interior with tan accents.  
Rated 8 out of 10

---

**Maintenance:** Last annual: 08/2024  
Full logs available

---

**Addition Features, Equipment or Comments** Aircraft is located at Lewiston-Nez Perce County Airport (LWS) in Lewiston, Idaho

---

## Broker

---

**Name** R Chris Walls

---

**Email:** chris.w@usaaircraft.com

---

**Designation** President | Area Aircraft Broker

---

**Address** 257 Amber Street, Ste D2, Pensacola, FL 32503  
United States

---

**Telephone:** (850) 208-3299 x 107

---

**Mobile:** (850) 637-6125

---

**Skype:** -

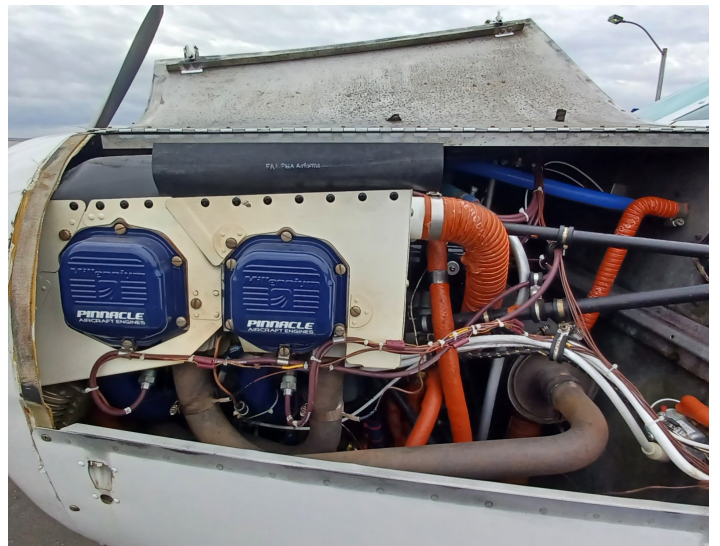
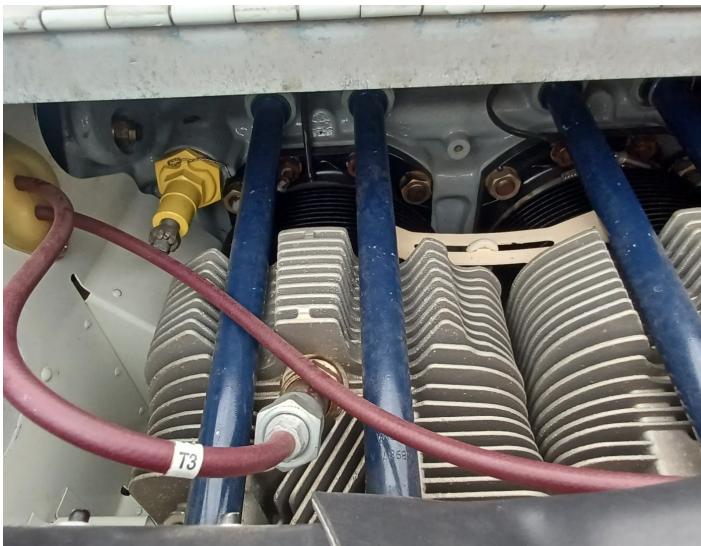
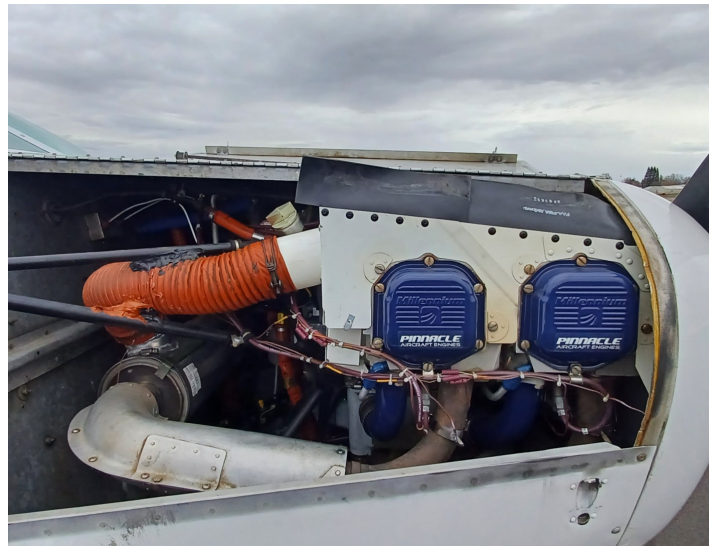
---

## Images

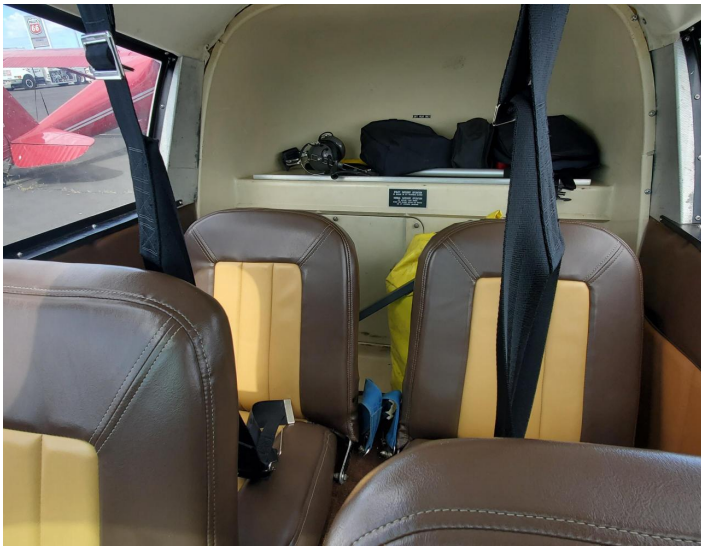
---

### Exterior





Interior



**Avionics**



